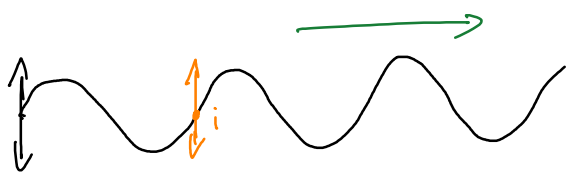
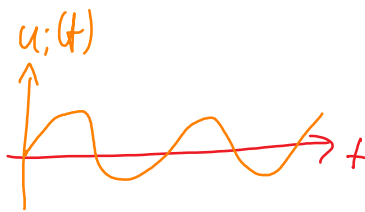
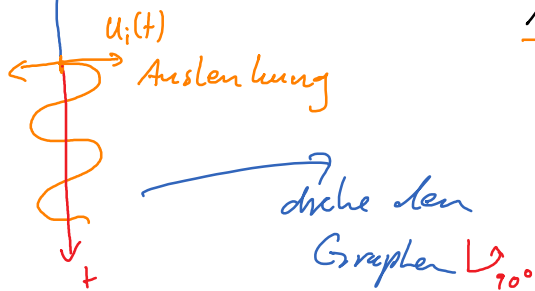


Ausbreitungsrichtung



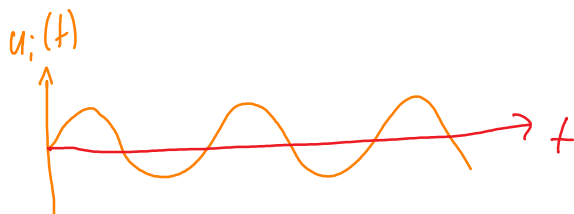
longitudinal

Auslenkung || Ausbreitungsrichtung

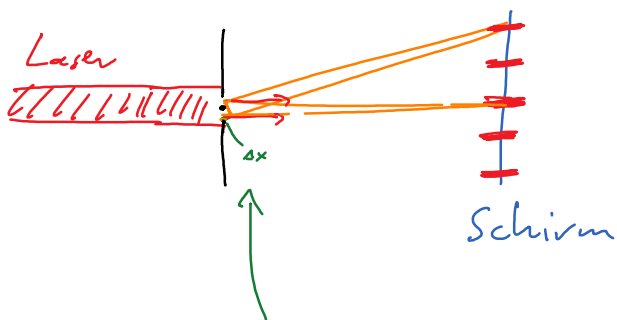


transversal

Auslenkung ⊥ Ausbreitungsrichtung



⑤ Laser am Doppelspalt

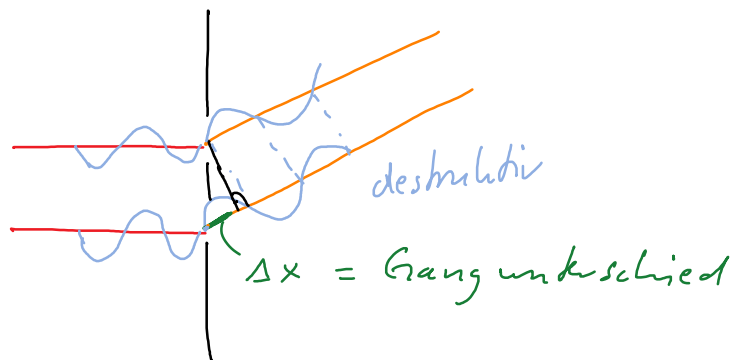


Maxima + Minima

→ Interferenz

→ Licht = Welle

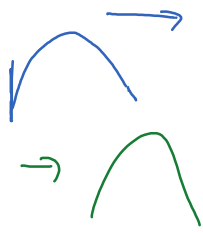
(transversale elektromagnetische Welle → später)



$$\Delta x = n \cdot \lambda \rightarrow \text{Max}$$

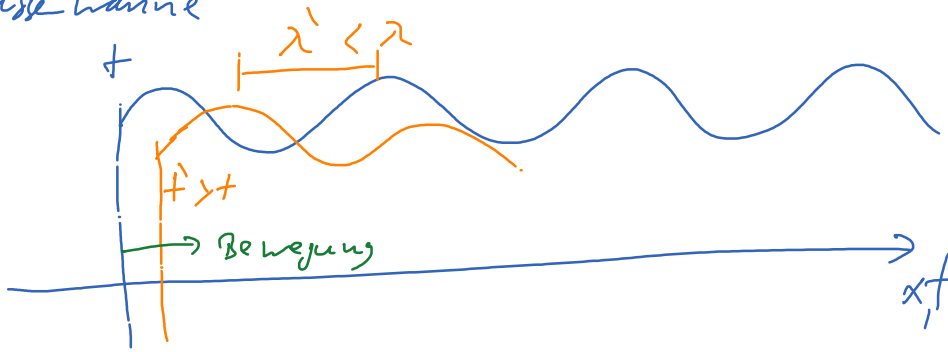
$$\Delta x = \frac{2n+1}{2} \lambda \rightarrow \text{Min}$$

Doppler-Effekt

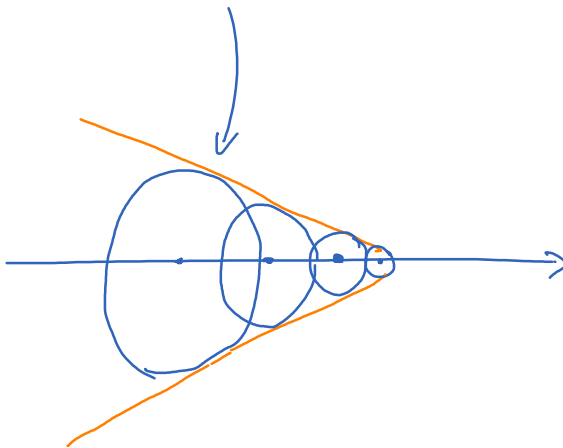


Änderung der Wellenlänge
aufgrund der (relativen) Bewegung
von Quelle und Beobachter

Wasserwanne



Mach'scher Kegel



Schallmauer

